

# A-series

TC7A | TC11A

Tracked Carrier

Tier 4 Final



**BELL**

# TC7A Tracked Carrier



## ENGINE

**Manufacturer**  
Cummins

**Model**  
B6.7

**Configuration**  
Inline 6, turbocharged and intercooled

**Gross Power**  
168 kW (225 hp) @ 2200 rpm

**Net Power**  
160 kW (215 hp) @ 2200 rpm

**Displacement**  
6.7 liter (409 cu.in)

**Fuel Tank Capacity**  
190 liters (42 US gal)

**Air Cleaner**  
Radial seal air cleaner with clear bowl pre-cleaner. Filter blockage is detected by a pressure transducer.

**Certification**  
The B6.7 meets Tier 4 final emissions regulations

## HYDRAULIC SYSTEM

**Hydrostatic Drive System**  
Electro-hydraulic pump control with variable displacement hydraulic motors. Closed loop system.

**Wheel Drive System**  
Double reduction planetary track drive

**Service Brake**  
Hydrostatic brake

**Park Brake**  
Fail to safe Spring Applied Hydraulic Released (SAHR) brake

**System Pressure**  
420 bar (6 092 psi)

**Filtration**  
13 micron spin-on filters

**Hydraulic Tank Capacity**  
107 liters (28 US gal)

## TRACK

**Track Type**  
Rubber tracks with steel inserts

**Tensioning System**  
Manually adjusted grease cylinder plus mechanical spring

## SUSPENSION

**Roller Quantity**  
6 per side

**Walking Beam Arrangement**  
Two terrain-response compound walking beams per side which, maximize the ground contact area, minimize ground pressure, reduce roller to track pressure and decrease the potential for de-tracking.

## DUMPING SYSTEM

**Configuration**  
Two double-acting, single stage, dump cylinders

**Flow Rate**  
56 liters (15 US gal) per minute

**Raise Time**  
13 seconds

**Lower Time**  
13 seconds

**Tipping Angle**  
60 degrees

**Safety**  
Bin pole which locks bin in the up position

## LOAD BODIES

**Standard**  
Utility tipping load body with tailgate. Sides and rear can be folded down to make a flat deck.

**Standard Body Capacity (SAE 2:1)**  
3.5 m<sup>3</sup> (4.6 yd<sup>3</sup>)

## ELECTRICAL SYSTEM

**Voltage**  
24 V

**Battery Type**  
Two AGM (Absorption Glass Mat) type

**Battery Capacity**  
2 X 75 Ah

**Alternator Rating**  
70 Amp

**Headlights**  
LED Hella Valuefit is fitted standard

**Extra Lighting Option**  
Optional LED bar light mounted to top of cab

**Camera**  
Standard

## CAB

**Configuration**  
Dedicated cab developed for the tracked carrier application

**Air Conditioning**  
HVAC system is standard fitment

**Safety**  
ROPS/FOPS certified according to the following standards: ISO3471, ISO13459, ISO3449

## VEHICLE PERFORMANCE

**Speed**  
11 km/h (6.8 mph)

**Gradient (laden)**  
49% (26 degrees)

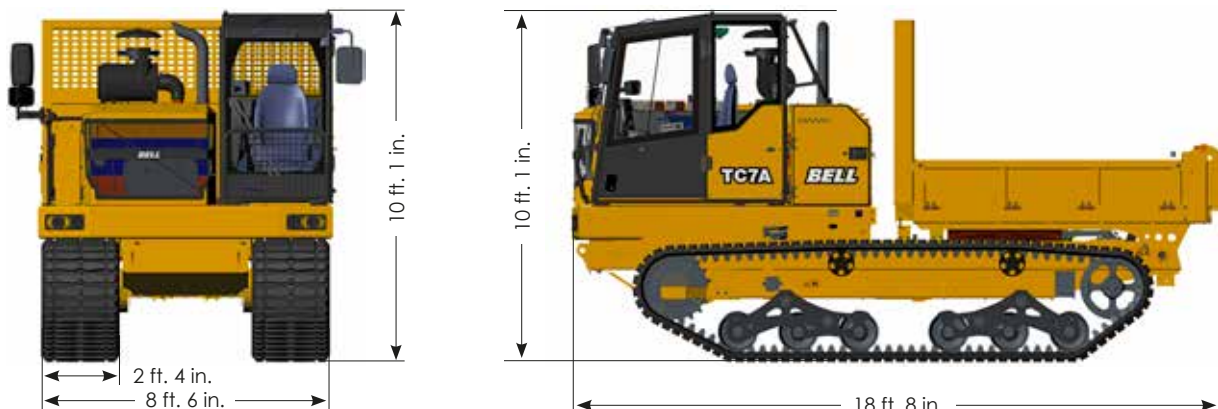
## VEHICLE MASS (STANDARD CONFIGURATION)

**Unladen**  
10 900 kg (24 030 lb)

**Laden**  
17 900 kg (39 463 lb)

**Payload**  
7 000 kg (15 432 lb)

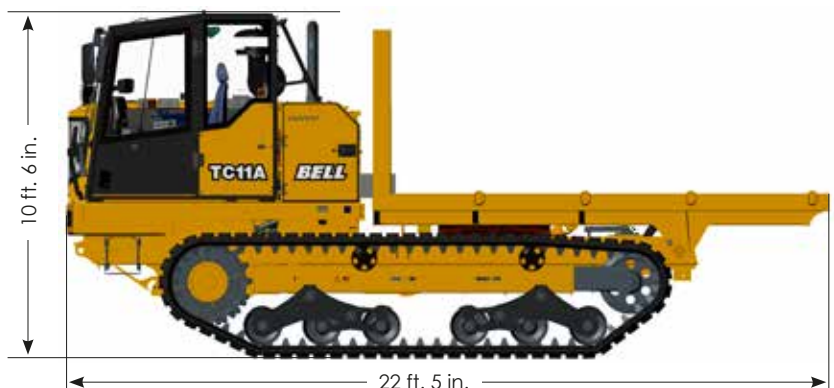
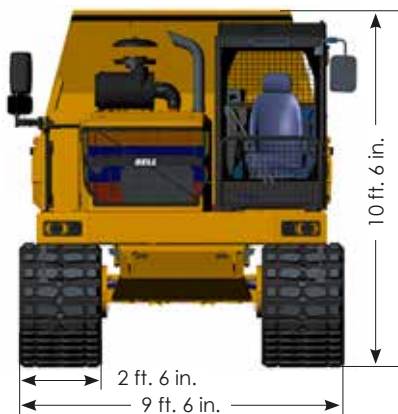
## Dimensions



# TC11A Tracked Carrier

<p><b>ENGINE</b></p> <p><b>Manufacturer</b> Cummins</p> <p><b>Model</b> B6.7</p> <p><b>Configuration</b> Inline 6, turbocharged and intercooled</p> <p><b>Gross Power</b> 186 kW (249 hp) @ 2000 rpm</p> <p><b>Net Power</b> 177 kW (237 hp) @ 2000 rpm</p> <p><b>Displacement</b> 6.7 liter (409 cu.in)</p> <p><b>Fuel Tank Capacity</b> 190 liters (42 US gal)</p> <p><b>Air Cleaner</b> Radial seal air cleaner with clear bowl pre-cleaner. Filter blockage is detected by a pressure transducer.</p> <p><b>Certification</b> The B6.7 meets Tier 4 final emissions regulations</p>	<p><b>Service Brake</b> Hydrostatic brake</p> <p><b>Park Brake</b> Fail to safe Spring Applied Hydraulic Released (SAHR) brake</p> <p><b>System Pressure</b> 420 bar (6 092 psi)</p> <p><b>Filtration</b> 13 micron spin-on filters</p> <p><b>Hydraulic Tank Capacity</b> 152 liters (140 US gal)</p> <p><b>TRACK</b></p> <p><b>Track Type</b> Rubber tracks with steel inserts</p> <p><b>Tensioning System</b> Manually adjusted grease cylinder plus mechanical spring</p>	<p><b>DUMPING SYSTEM</b></p> <p><b>Configuration</b> Two double-acting, single stage, dump cylinders</p> <p><b>Flow Rate</b> 92 liters (24 US gal) per minute</p> <p><b>Raise Time</b> 12 seconds</p> <p><b>Lower Time</b> 12 seconds</p> <p><b>Tipping Angle</b> 60 degrees for normal load bed 40 degrees for flat deck</p> <p><b>Safety</b> Bin pole which locks bin in the up position</p>	<p><b>Alternator Rating</b> 70 Amp</p> <p><b>Headlights</b> LED Hella Valuefit is fitted standard</p> <p><b>Extra Lighting Option</b> Optional LED bar light mounted to top of cab</p> <p><b>Camera</b> Standard</p>
<p><b>HYDRAULIC SYSTEM</b></p> <p><b>Hydrostatic Drive System</b> Electro-hydraulic pump control with variable displacement hydraulic motors. Closed loop system.</p> <p><b>Wheel Drive System</b> Double reduction planetary track drive</p>	<p><b>SUSPENSION</b></p> <p><b>Roller Quantity</b> 6 per side</p> <p><b>Walking Beam Arrangement</b> Two terrain-response compound walking beams per side which, maximize the ground contact area, minimize ground pressure, reduce roller to track pressure and decrease the potential for de-tracking.</p>	<p><b>LOAD BODIES</b></p> <p><b>Standard</b> Load body with tailgate</p> <p><b>Standard Body Capacity (SAE 2:1)</b> 5.25 m<sup>3</sup> (6.9 yd<sup>3</sup>)</p> <p><b>Option</b> Tipping flat deck (which can be bolted down)</p>	<p><b>CAB</b></p> <p><b>Configuration</b> Dedicated cab developed for the tracked carrier application</p> <p><b>Air Conditioning</b> HVAC system is standard fitment</p> <p><b>Safety</b> ROPS/FOPS certified according to the following standards: ISO3471, ISO13459, ISO3449</p>
		<p><b>ELECTRICAL SYSTEM</b></p> <p><b>Voltage</b> 24 V</p> <p><b>Battery Type</b> Two AGM (Absorption Glass Mat) type</p> <p><b>Battery Capacity</b> 2 X 75 Ah</p>	<p><b>VEHICLE PERFORMANCE</b></p> <p><b>Speed</b> 11 km/h (6.8 mph)</p> <p><b>Gradient (laden)</b> 55% (29 degrees)</p> <p><b>VEHICLE MASS (STANDARD CONFIGURATION)</b></p> <p><b>Unladen</b> 13 900 kg (30 644 lb)</p> <p><b>Laden</b> 24 900 kg (54 895 lb)</p> <p><b>Payload</b> 11 000 kg (24 251 lb)</p>

## Dimensions





# TC11A

All dimensions are shown in feet and inches unless otherwise stated between brackets. Under our policy of continuous improvement we reserve the right to change technical data and design without prior notice. Photographs featured in this brochure may include optional equipment.

**BELL INTERNATIONAL: Tel: +27 (0)35-907 9431**

**E-mail: [marketing@bellequipment.com](mailto:marketing@bellequipment.com)**

**Web: [www.bellequipment.com](http://www.bellequipment.com)**



Tel: +61 (0)8-9355-2442



Tel: +49 (0)6631 / 91-13-0



Tel: +27 (0)11-928-9700



Tel: +44 (0)1283-712862



Tel: +33 (0)5-55-89-23-56



Tel: +7-495-287-80-02



Tel: (704) 655 2802

**Strong Reliable Machines  
Strong Reliable Support**

# **BELL**